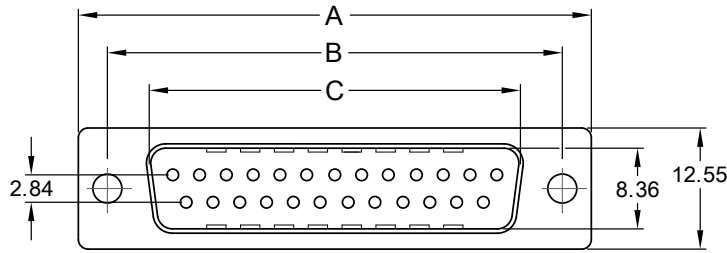
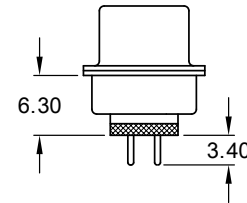
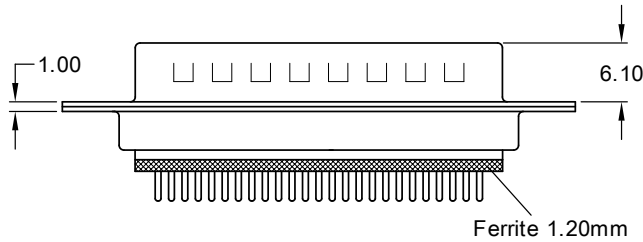


male



FERRITE SPECIFICATION

No. of Contacts	Measured Value ( $\Omega$ )	Test Frequency
009	20 min. 40 min.	25 MHz 100 MHz
015	15 min. 35 min.	25 MHz 100 MHz
025	15 min. 40 min.	25 MHz 100 MHz



Ordering Code

SDM - xxx - S111 - 95 / F XXX

No. of contacts

Option

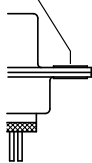
Plating: -95 = tin(leadfree)/gold

General Specification page 72

No. of contacts	Dimension		
	A	B	C
009	<u>30.81</u> 1.213	<u>24.99</u> .984	<u>16.92</u> .666
015	<u>39.20</u> 1.543	<u>33.30</u> 1.311	<u>25.25</u> .994
025	<u>53.05</u> 2.089	<u>47.04</u> 1.852	<u>38.96</u> 1.534

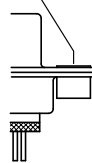
Options

Mounting Hole  
 $\varnothing$  3.05



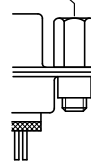
T0

Thread Rivet  
4-40 UNC



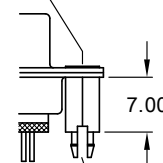
T

Jack Screw  
4-40 UNC



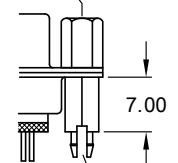
TJ

Inner Thread  
4-40 UNC



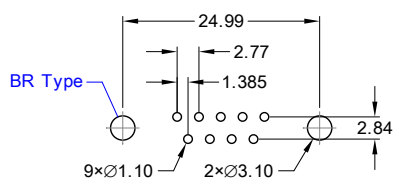
BR

Jack Screw  
4-40 UNC

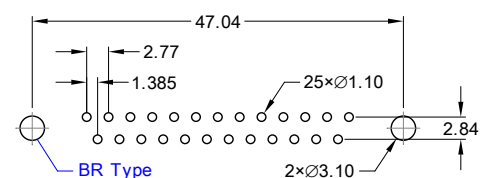


BRJ

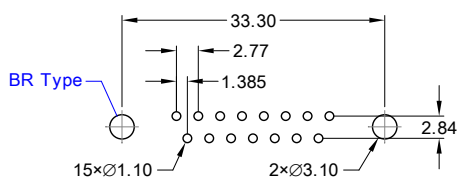
PCB Layout „male“



9 pin



25 pin



15 pin