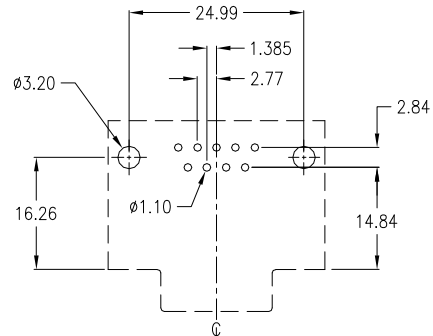
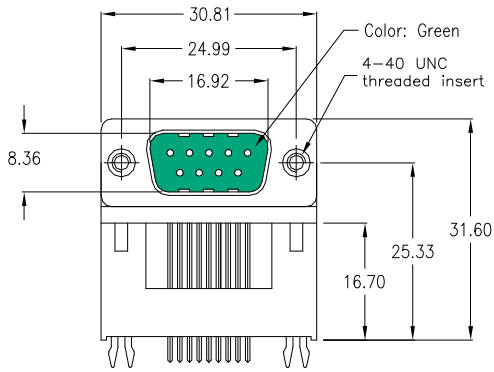
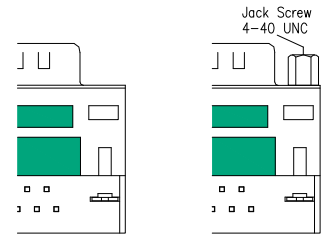
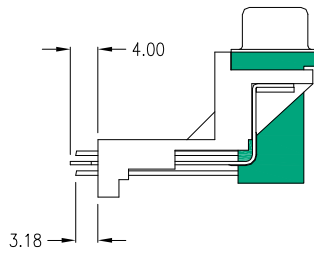
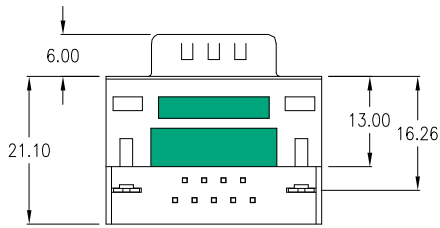


**9-pin male raised**



PCB hole layout



Style "-MN"

Style "-MNJ"

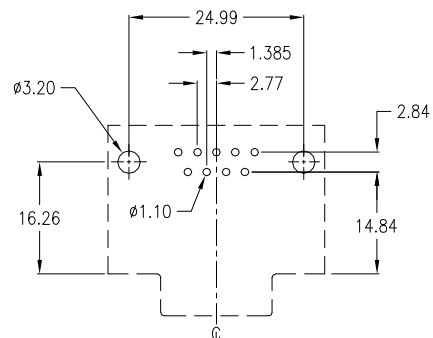
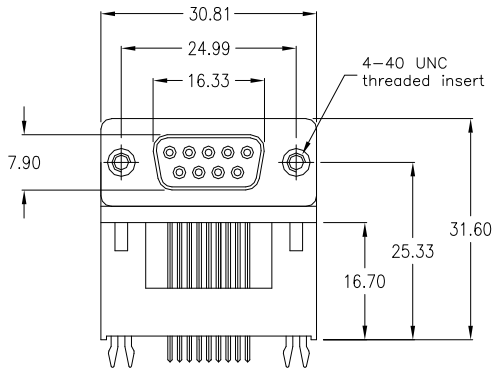
with 2 grounding clips;  
w/o jack screws  
*Standard*  
( as above drawing )

with 2 grounding clips;  
2 jack screws 4-40 UNC  
mounted  
*Option*

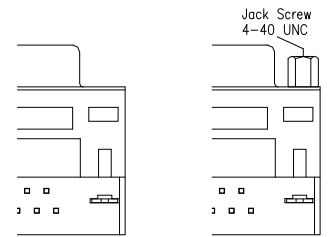
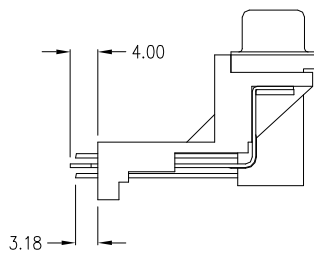
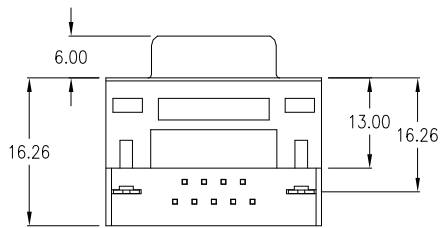
SDD-0900-2-95-MN

SDD-0900-2-95-MNJ

**9-pin female raised**



PCB hole layout



Style "-FN"

Style "-FNJ"

with 2 grounding clips;  
w/o jack screws  
*Standard*  
( as above drawing )

with 2 grounding clips;  
2 jack screws 4-40 UNC  
mounted  
*Option*

SDD-0900-2-95-FN

SDD-0900-2-95-FNJ