

SIB Series
single-in-line Strips
breakable and solid insulator available
Unless otherwise specifically requested, the strips will be delivered either in solid or breakable plastic depending on availability of the insulator bodies.

breakable shown solide shown

2.50

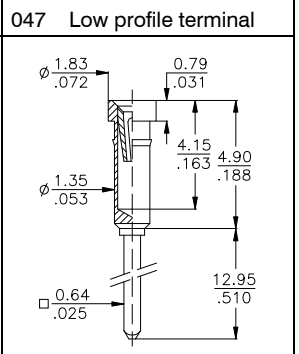
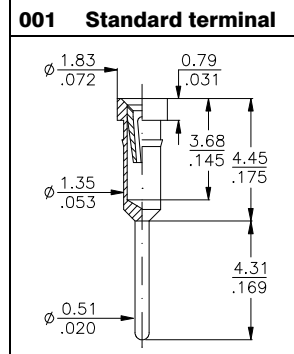
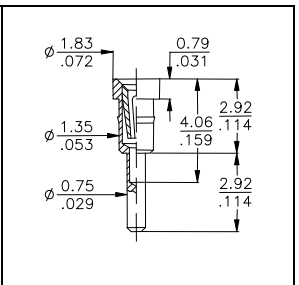
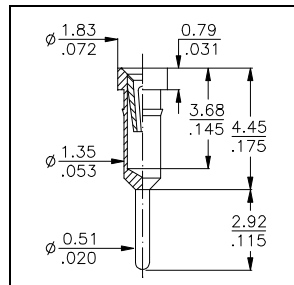
"head flush" "head above"

SIB Series
Standard "head flush"
SIB-1xx-Fxxx-xx

Alternative: "head above"
SIB-1xx-Sxxx-xx

Number of contacts standard breakable sizes
20; 32 and 40

Number of contacts either breakable or solid available
from **02 to 40**



DIS & TIS Series
dual and triple row 2,54mm grid

2.54 5.00

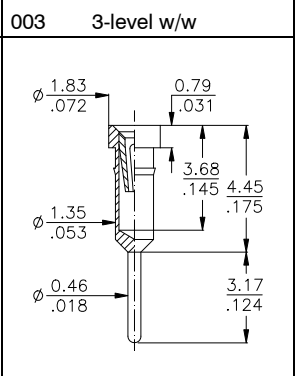
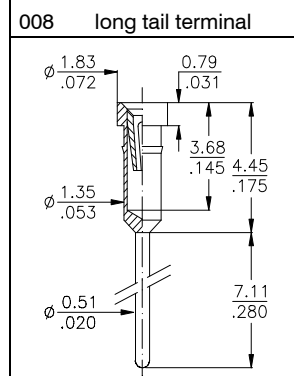
2.54

DIS Series
DIS-2xx-Fxxx-xx

Number of contacts available
from **04 to 80**

TIS Series
TIS-3xx-Exxx-xx

Number of contacts available
from **06 to 96**



Strips
Other lengths & pin-outs available on request.

Specifications
refer to page 49 of this catalogue

Terminals
For other terminal styles please refer to the pages 46 to 48 of this catalogue or contact your closest sales office.

How to order

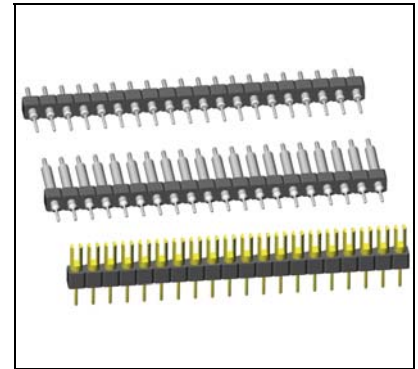
XXX - XXX - X XXX - XX

Series SIB = single-in-line strips DIS = dual-in-line strips... TIS = triple-in-line strips...	Rows 1 2 3	Nbr of contacts see above table	Insulator F = head flush S = head above E = Epoxy FR4 TIS Series only	Terminal style see drawings above or refer to pages 46 to 48 of this catalogue for other types.	Plating - 95 = tin/gold - 55 = gold/gold - 99 = tin/tin (tin is leadfree)
--	--	---	--	--	--

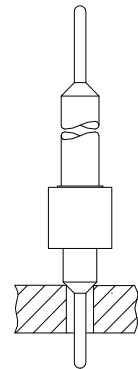


Board to Board Terminals

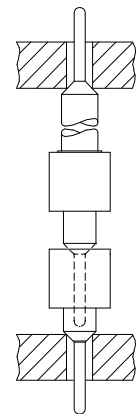
<p>077</p>	<p>057</p>	<p>037</p>
<p>058</p>	<p>059</p>	<p>056</p>
<p>542</p>	<p>038</p>	<p>353</p>
<p>036</p>	<p>Many other terminals and custom specific terminal styles are available on request, or refer to the pages 46 to 48 of this catalogue.</p>	



Application Examples



Possible Terminals:
 037; 056; 057; 058; 059
 077; 220; 542; 544
 562; 583; 770



Possible Terminals:
 037; 056; 057; 058; 059
 077; 078; 542; 544
 562; 583; 770

How to order

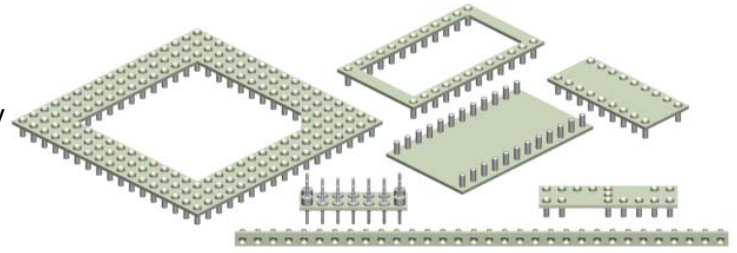
XXX - x xx - X xxx - xx

<p>Series SIB = single-in-line strips. DIS = dual-in-line strips... TIS = triple-in-line strips..</p>	<p>Rows 1 2 3</p>	<p>Nbr of contacts 1-row = 02 to 40 2-row = 04 to 80 3-row = 06 to 96</p>	<p>Insulator S = Plastic E = Epoxy FR4 (TIS Series only) dimension see socket strip page 5</p>	<p>Terminal style see drawings above or refer to pages 46 to 48 of this catalogue for other types.</p>	<p>Plating - 55 = gold - 99 = tin (leadfree)</p>
--	--	---	---	---	---

E-tec's super low profile sockets and adapters are designed for use in applications where height above board is most critical.

The sockets have a profile of 0,60mm above board and they can be combined with the adapters to achieve a board to board interconnection height of 2,20mm max.

Also available in this socket range are the ultra low profile SMT sockets with a height above board of only 3,45mm.



Super Low Profile Sockets						Super Low Profile Adapters	
SMT use			through hole use				
Terminal style	DIM "A"	DIM "B"	DIM "C"	DIM "D"	DIM "E"	<p>Style 377</p>	
144	3,45/.136	3,05/.120	0,94/.037	0,45/.018	1,15/.045		

Specifications			
Mechanical data		Electrical data	
Force per contact (avg)	0,70N insertion / 0.25N extraction	Breakdown voltage at 60 Hz	500 V AC
Contact life	>50 cycles min.	Contact resistance at 1A	4,3 mΩ typ
Solderability	as per IEC 60068-2-58	Insulation resistance	5 × 10 ⁹ Ω min.
Material		Current rating	1A max., 100V
Terminal (RoHS compliant)	BeCu	Capacitance	2 pF max.
Insulator (RoHS compliant)	Glass Epoxy FR4	Operating temperature	
		-55 °C to +125 °C	

How to order

XXX - x xx - E xxx (- xxx) - xx (/x)

Series	DIP spacing	Nbr of contacts	Terminal styles	Plating	Pitch
LSP = DIP sockets SSP = SIP sockets DSP = 2-row SIP's PGS = PGA sockets ZZS = Zig-Zag sockets	see pages for LSP series: POS for SSP series: SIB/SIS for DSP series: DIS for ZZS series: ZZP for PGS series: PGA only nbr of contacts	See drawings above for 2,54mm and 2,00mm pitch. For 1,27mm pitch please contact nearest sales office.	- 95 = tin/gold (tin leadfree) (not available for adapter terminals) - 55 = gold/gold - 99 = tin/tin (leadfree)	Complete with 1 = 1,27mm 2 = 2,00mm 2.54mm pitch is standard. Others available on request	

Grid size & Configuration code only for PGA sockets

Please refer to PGA socket pages 29 to 31