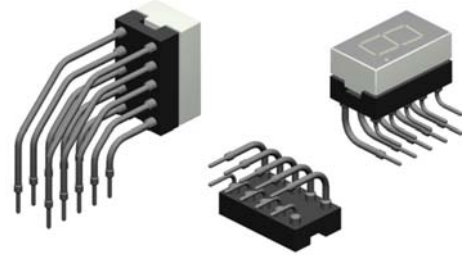


LED socket mounted with precision turned pins ensure perfect contact reliability.

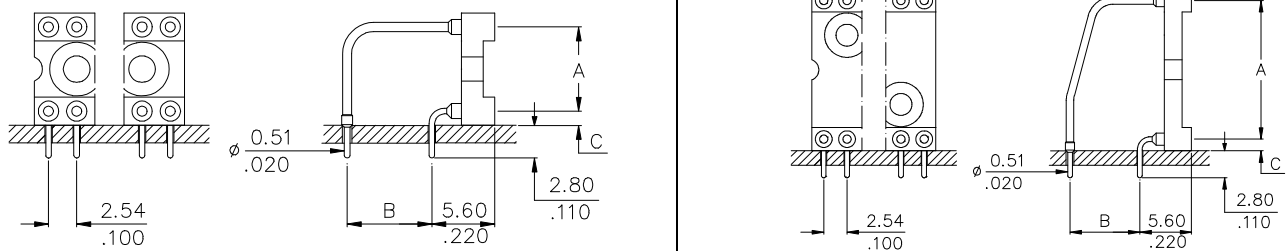
The sockets are available in horizontal and vertical executions.

The contacts are designed to hold many different IC's and LED's with short leads.

The LED sockets are also designed to accept DIP Switches.



LEH Series - Horizontal -

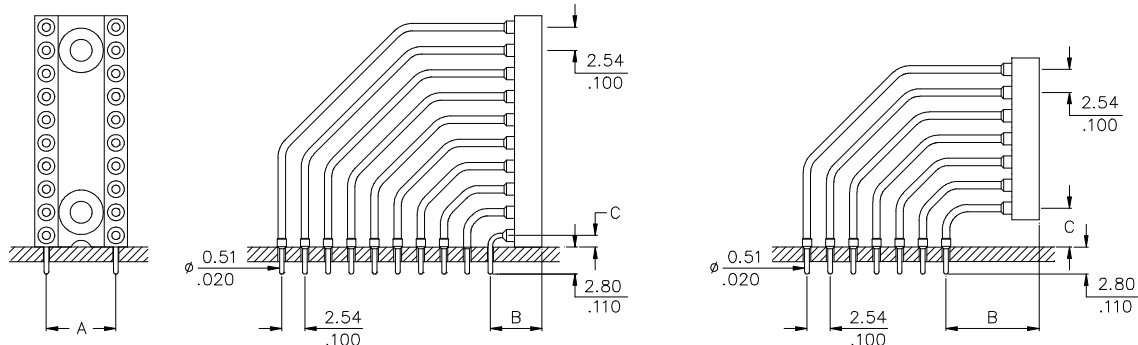


Ordering Code

Dimensions of the various socket types

pin-outs on request	Standard type -900-		Option -901	Option -902	Option -903	all types Dim. "C"
	Dim. "A"	Dim. "B"	Dim. "B"			
LEH - 2 xx - S xxx - 95	5,08/.200	5,08/.200	2,54/.100	7,62/.300	-	1,27/.050
LEH - 3 xx - S xxx - 95	7,62/.300	7,62/.300	2,54/.100	5,08/.200	-	1,27/.050
LEH - 4 xx - S xxx - 95	10,16/.400	10,16/.400	2,54/.100	5,08/.200	7,62/.300	1,27/.050
LEH - 6 xx - S xxx - 95	15,24/.600	7,62/.300	15,24/.600	-	-	1,27/.050
LEH - 6 xx - S904 - 95	15,24/.600	7,62/.300	-	-	-	2,87/.112

LEV Series - Vertical -



Drawing for standard socket type -910

Drawing for all other options

Ordering Code

Dimensions

pin-outs on request	Standard Type -910		Options						
	all types "A"	"B"	"C"	-915 "B"	"C"	-916 "B"	"C"	-917 "B"	"C"
LEV - 2 xx - S xxx - 95	5,08/.200	5,60/.220	1,27/.050	8,14/.320	3,81/.150	10,68/.420	6,35/.250	13,22/.520	
LEV - 3 xx - S xxx - 95	7,62/.300	5,60/.220	1,27/.050	8,14/.320	3,81/.150	10,68/.420	6,35/.250	13,22/.520	
LEV - 6 xx - S xxx - 95	15,24/.600	5,60/.220	1,27/.050	8,14/.320	3,81/.150	10,68/.420	6,35/.250	13,22/.520	

LEV - 3 xx - S911 - 95 7,62/.300 10,16/.400 4,87/.192

For technical specifications please refer to page 49

How to order

LE X - x xx - S xxx - 95

Execution

H = Horizontal
V = Vertical

DIP spacing

Dim "A" in inch

Nbr of contacts

on request

Socket Type

see above drawings
Other options available on request.

Plating

- **95** = tin/gold
(leadfree)