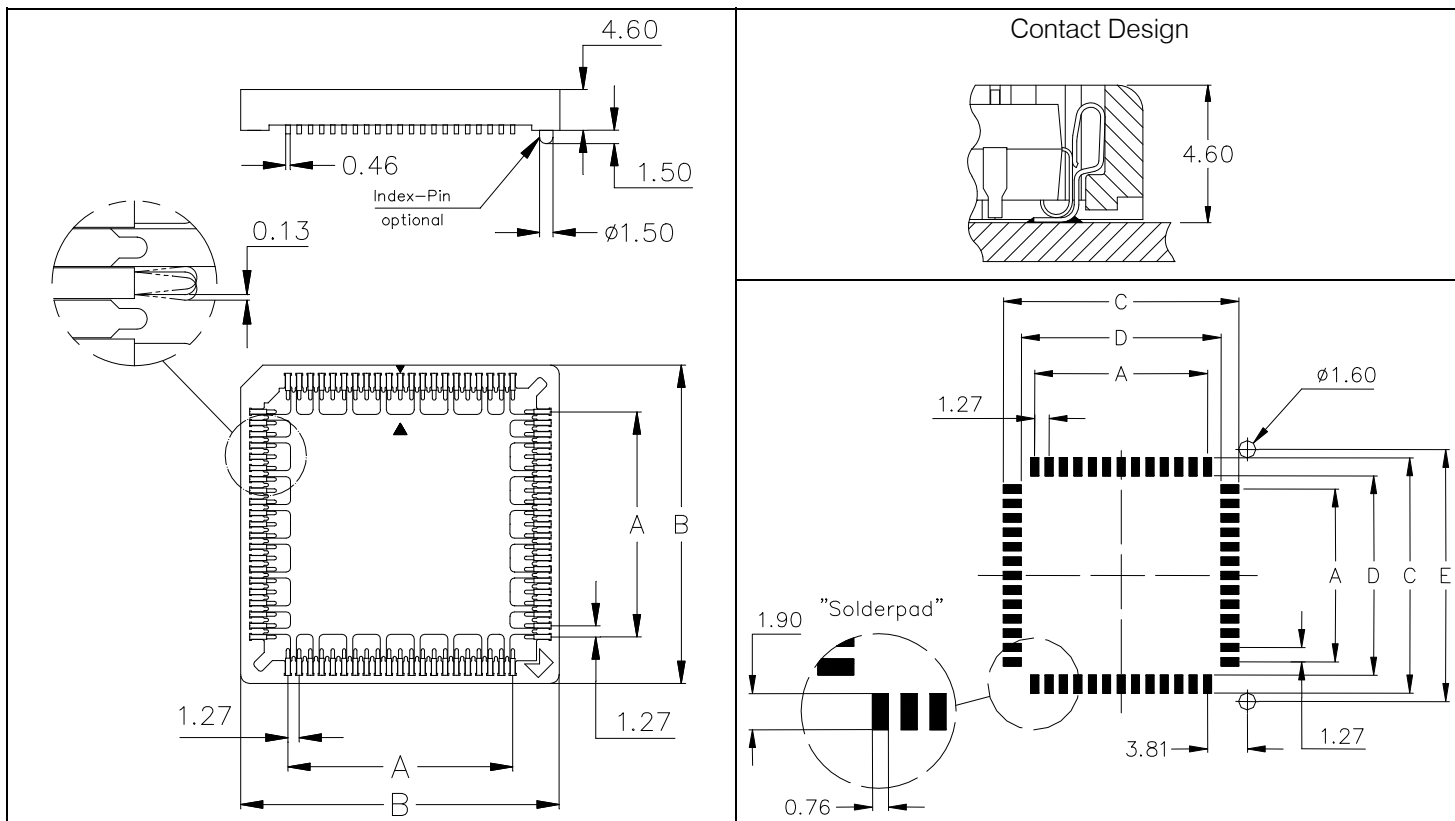
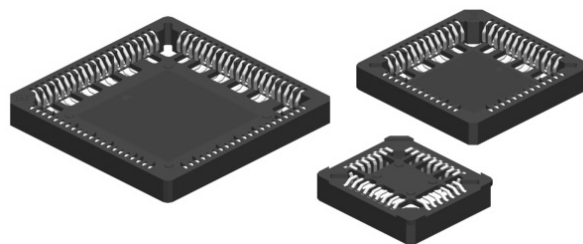


Only 4.60mm height above board.
 Identical PCB layout for socket and chip.
 Solder terminals visible for post solder checks.
 Available with index pins under the insulator for correct orientation of the sockets.
 Diagonal slots for easy extraction of the chip with the Universal extraction tool PUL-200.
 Sockets correspond to JEDEC Norms.
 Also available in reel packaging.



Specifications

Mechanical data

Contact (RoHS compliant) Phosphor bronze
 Plating Sn (leadfree) over Ni
 Insulator (RoHS compliant) High temp plastic black UL 94 V-0

Temperature

Operating temp. - 40°C to +105°C
 Processing temp. +250°C +0/-5°C for 20~40sec.

Electrical data

Measuring voltage 100 V RMS / 150V DC
 Breakdown voltage >600 V RMS
 Contact resistance <20 mΩ
 Insulation resistance >5000 MΩ
 Current rating 1 A max., 100V
 Capacitance <2 pF

Please ask for availability and MOQ before you consider the article for development, design in or production purposes.

PIN	Ordering Code		Dimensions mm				
	PLCC SMT without index pins	PLCC SMT with index pins	"A"	"B"	"C"	"D"	"E"
20	PLS - 020 - H105 - 99	PLS - 020 - H105 - 99/4	5,08	15,58	10,50	6,70	12,70
28	PLS - 028 - H105 - 99	PLS - 028 - H105 - 99/4	7,62	18,12	12,61	8,81	15,24
32	PLS - 032 - H105 - 99 (rectangular)	PLS - 032 - H105 - 99/4 (rectangular)	7,62 x 10,16	20,66 x 18,12	13,04 x 15,58	9,24 x 11,78	17,78
44	PLS - 044 - H105 - 99	PLS - 044 - H105 - 99/4	12,70	23,20	18,12	14,32	20,32
52	PLS - 052 - H105 - 99	PLS - 052 - H105 - 99/4	15,24	25,74	20,86	17,06	22,86
68	PLS - 068 - H105 - 99	PLS - 068 - H105 - 99/4	20,32	30,82	25,74	21,94	27,94
84	PLS - 084 - H105 - 99	PLS - 084 - H105 - 99/4	25,40	35,90	30,39	26,59	33,02
For reel packing pls. order with - 99/R							

PUL -200 Universal extraction tool for all sizes (see also page 44)