

# DM - Series DIMM Sockets

## Vertical Type 168-Contact

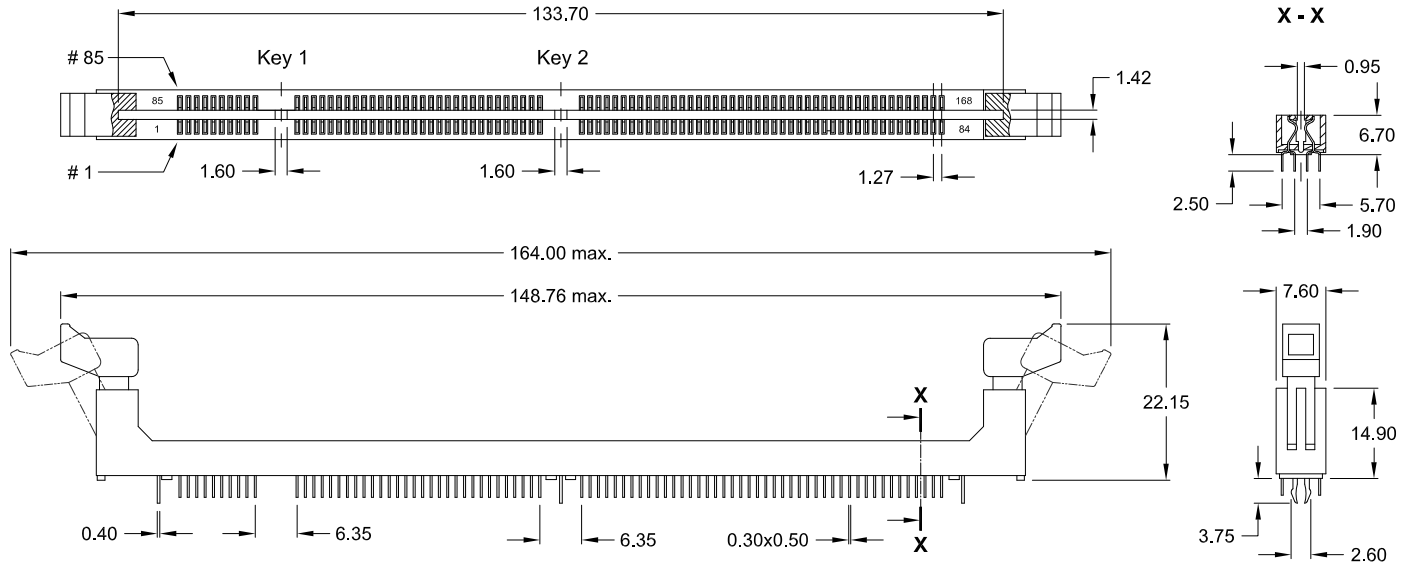


DIMM sockets are only available as long latch type  
( Module locking extractors ).

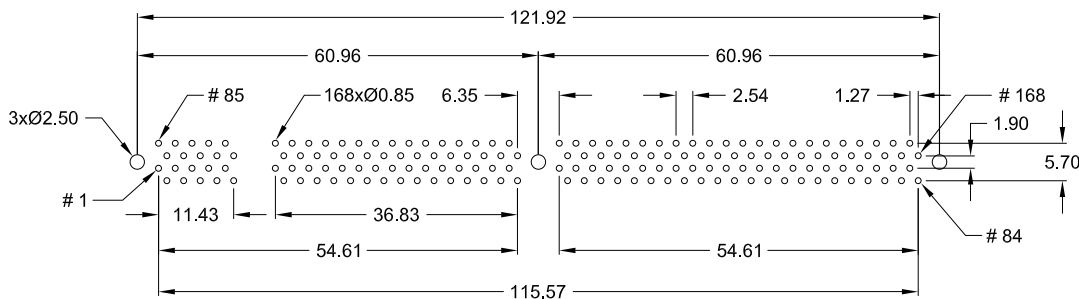
Insertion & extraction of the module can be made without any tools.

Positive polarization prevents wrong insertion of the module.

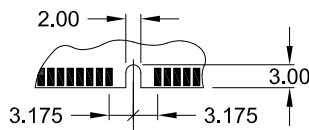
Contacts are designed with an anti-overstress feature for long contact life. Selective Gold/Tin plated. Gold only in contact area.



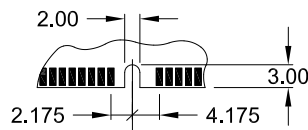
### PC Board hole layout



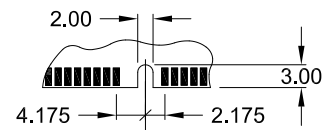
#### Module keying Type "A"



#### Module keying Type "B"



#### Module keying Type "C"



### Specification

Current rating	1 A max., 250V AC	Operating temperature	-25° C to +105° C min.
Contact resistance	30 mΩ max.	Insulator (RoHS compliant)	PA66 UL 94 V-0
Insulation resistance	1000 MΩ min.	Contact (RoHS compliant)	Copper Alloy
Withstanding voltage	500V AC / 1 Minute	Plating	Au / Sn (leadfree) over Ni

Pin	Socket Type	Key No. 1	Key No. 2	Ordering Code
168 pin	DRAM 5 Volt	Type "A"	Type "B"	<b>DM1 - 168 - VAB9 - 95/1L</b>
168 pin	SDRAM 5 Volt	Type "B"	Type "B"	<b>DM1 - 168 - VBB9 - 95/1L</b>
168 pin	UDRAM 5 Volt	Type "C"	Type "B"	<b>DM1 - 168 - VCB9 - 95/1L</b>
168 pin	DRAM 3,3 Volt	Type "A"	Type "A"	<b>DM1 - 168 - VAA9 - 95/1L</b>
168 pin	SDRAM 3,3 Volt	Type "B"	Type "A"	<b>DM1 - 168 - VBA9 - 95/1L</b>
168 pin	UDRAM 3,3 Volt	Type "C"	Type "A"	<b>DM1 - 168 - VCA9 - 95/1L</b>