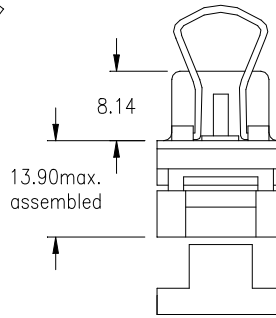
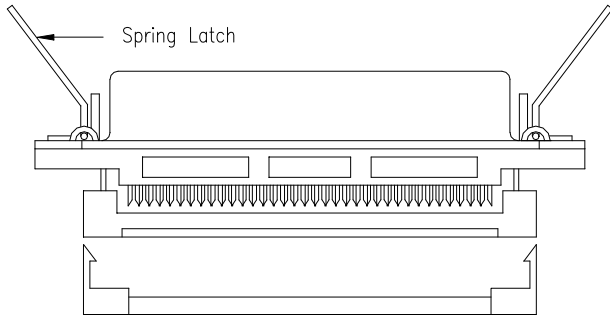
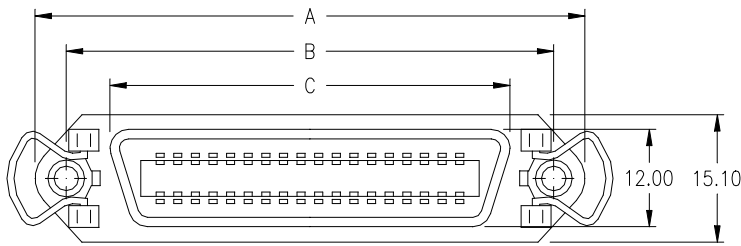
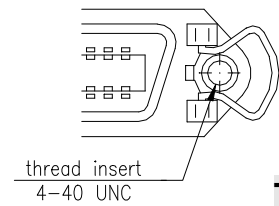
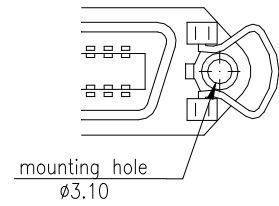


**female - spring latch type -**



**Option:**



**T0**

**T**

No. of contacts	Dimension		
	A	B	C
<b>036</b>	67.80	59.74	48.90
	2.669	2.352	1.925
<b>050</b>	82.80	74.85	64.00
	3.259	2.946	2.520

Plating: -95 = tin(leadfree)/gold

General Specification:  
 Centronics - page D

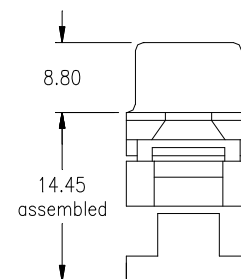
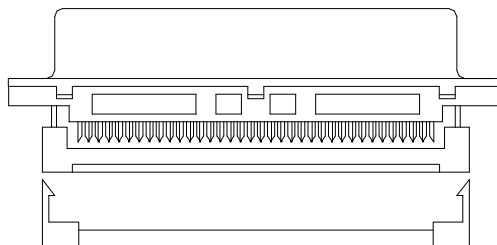
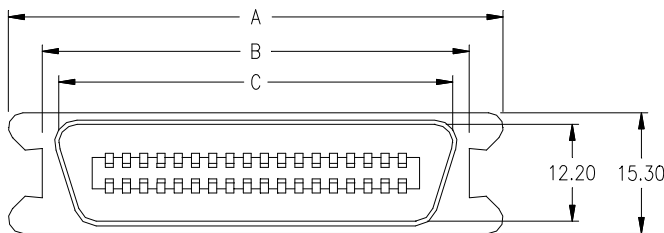
**Ordering Code**

**CCF - xxx - S201 - 95 / XX**

No. of contacts

Option

**male - bail lock type -**



No. of contacts	Dimension		
	A	B	C
<b>036</b>	67.69	59.74	49.35
	2.665	2.352	1.943
<b>050</b>	82.78	74.85	64.47
	3.259	2.946	2.538

Plating: -95 = tin(leadfree)/gold

General Specification:  
 Centronics - page D

**Ordering Code**

**CCM - xxx - S201 - 95**

No. of contacts



**mechanical data**

Mating force per contact	≤ 3,2 N
Unmating force per contact	≥ 0,7 N
Temperature range	-55° C to +105° C
Moisture absorption from air 50% rh	0,10%

IDC Connector types accept AWG 26 or AWG 28 standard wire

**materials and plating**

Insulator	thermoplastic glassfilled UL 94V - 0
Shell	steel
- plating	tin (leadfree)
Spring latch	stainless-steel
Male contact	phosphor bronze
- plating (tin leadfree)	-95 = solder side Sn; contact side Au over Ni -55 = solder and contact side Au over Ni
Female contact	phosphor bronze
- plating (tin leadfree)	-95 = solder side Sn; contact side Au over Ni -55 = solder and contact side Au over Ni

**electrical data**

max. Current rating	5 A
Operating voltage	250 V
Test voltage between contacts	1000 V / 50/60 Hz / 1 min
Test voltage between shell and contacts	1000 V / 50/60 Hz / 1 min
Contact resistance	25 mΩ max. mated
Insulation resistance	1000 MΩ min. at 500V DC
Dielectric withstanding voltage	1000 V AC rms. for one Minute