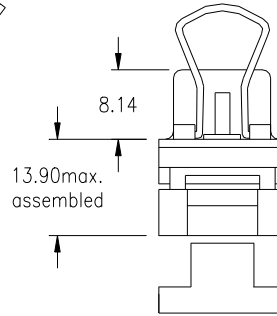
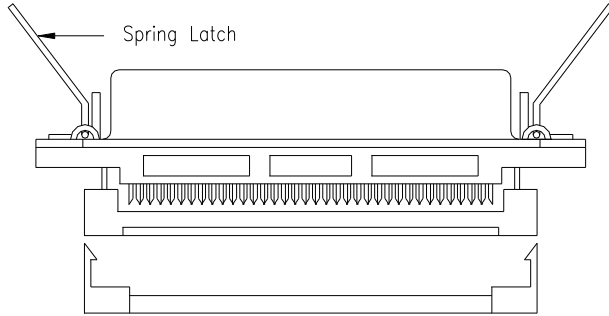
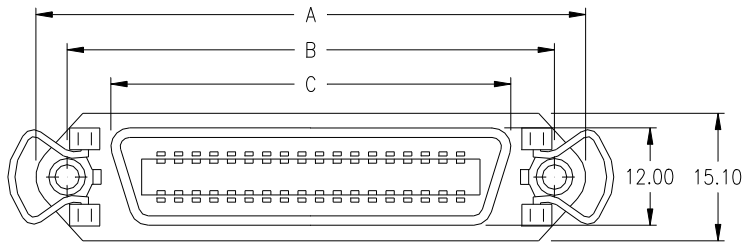
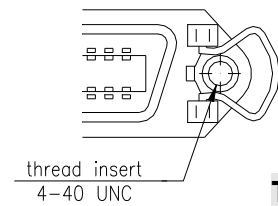
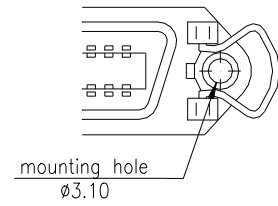


female - spring latch type -



Option:



T0

T

No. of contacts	Dimension		
	A	B	C
036	67.80	59.74	48.90
	2.669	2.352	1.925
050	82.80	74.85	64.00
	3.259	2.946	2.520

Plating: -95 = tin(leadfree)/gold

General Specification:
Centronics - page D

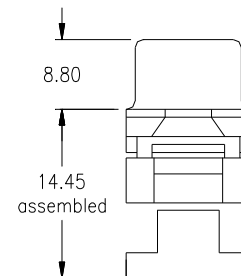
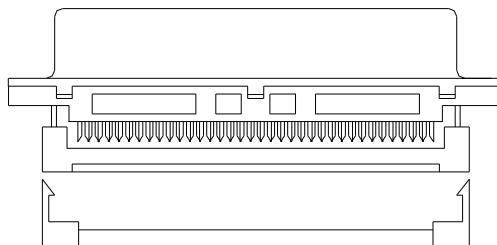
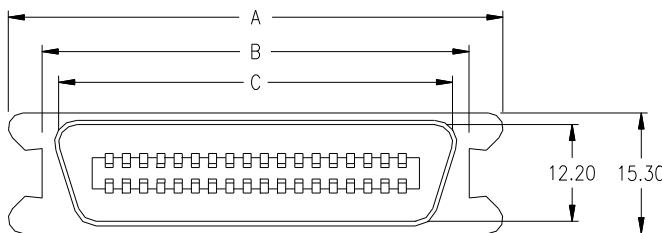
Ordering Code

CCF - xxx - S201 - 95 / XX

No. of contacts

Option

male - bail lock type -



No. of contacts	Dimension		
	A	B	C
036	67.69	59.74	49.35
	2.665	2.352	1.943
050	82.78	74.85	64.47
	3.259	2.946	2.538

Plating: -95 = tin(leadfree)/gold

General Specification:
Centronics - page D

Ordering Code

CCM - xxx - S201 - 95

No. of contacts