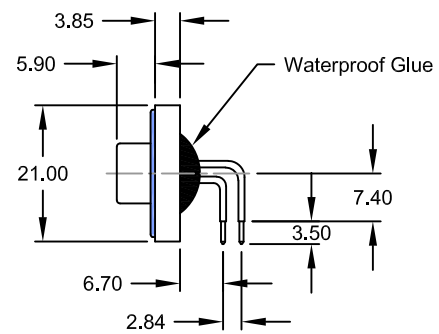
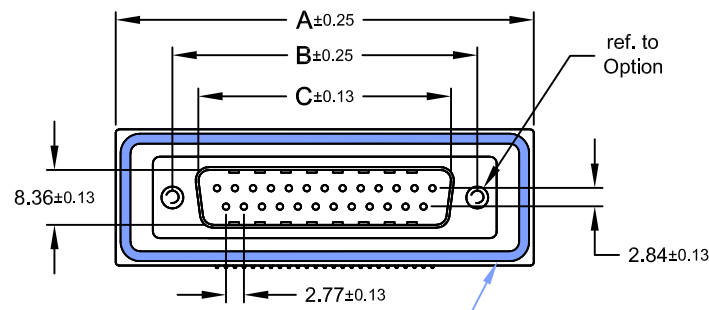
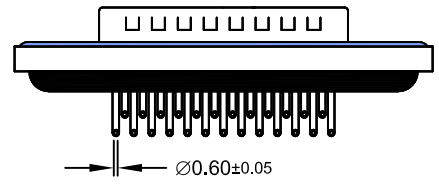


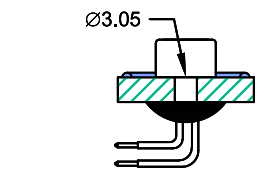
REV.	DESCRIPTION	DATE	DRAWN
A	New	10.11.2006	RH
B	frame	23.07.2008	Ronny
C	general update	09.08.2019	Ronny



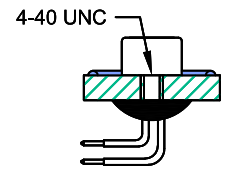
Order Code
SDM-xxx-NIP7-55/L2TX



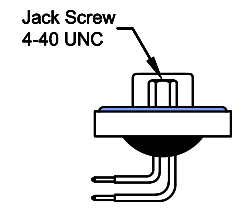
Dimension mm					No. of Contact
A	B	C	D	E	
39,40	24,99	16,92	20,00	28,20	009
47,70	33,30	25,25	28,00	36,50	015
64,50	47,04	38,96	41,50	51,00	025



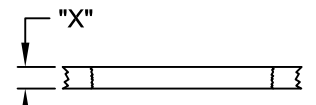
Option: **T0**



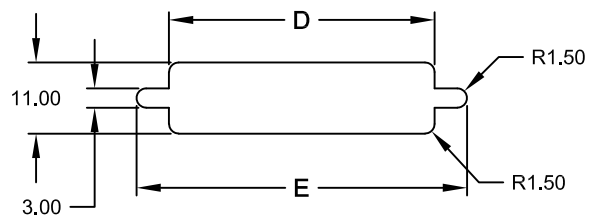
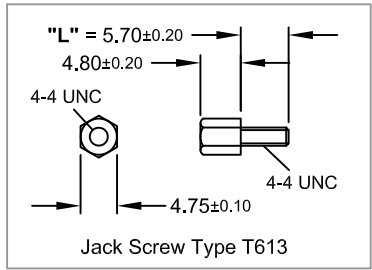
Option: **T**



Option: **TJ**
(Jack Screws mounted)



Panel Thickness "X" between 1.20~2.00mm for Screw "L" = 5.70



Recommended Panel CUT-OUT

Specifications

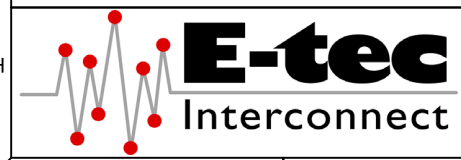
Electrical
Current rating: 5A
Insulation resistance: 5000MΩ min.
Contact resistance: 10mΩ max.
Withstanding voltage: 1000V AC rms

Material
Contact: Brass
Plating: Au flash over Ni
Insulator: PBT UL 94V-0
Shell: Steel
Plating: Ni
Operating temperature: -55°C to +85°C



Salt Spray: 48 Hours
Waterproof Rate: IP 67 min.

E-tec 2019 © - all rights reserved www.e-tec.asia

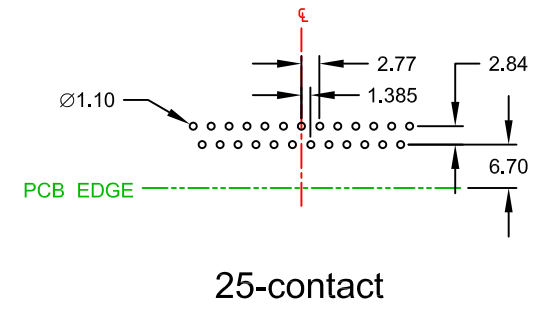
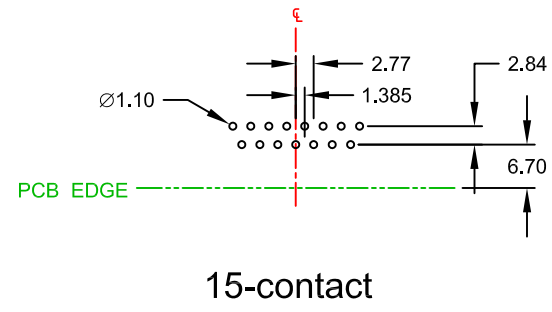
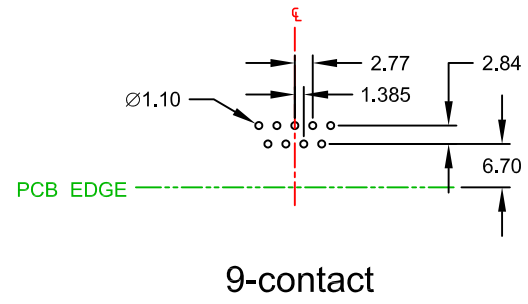


UNIT	GENERAL TOLERANCE		DRAWN	DATE	DWG. NO.	SHEET 1/2
mm	X.° ±	X. ±	RH	10.11.2006	SDM-NIP7/L2T	REV. C
SCALE	.X° ±	.X ±	CHECK	09.08.2019	SERIES NO.	
Free	.XX° ±	.XX ± 0.25	APPROVE	09.08.2019	SDM-xxx-NIP7-xx/L2TX	
	.XXX° ±	.XXX ±	Fagi			

Waterproof D-Sub
Standard "Male"
Right Angle Type w/o Brackets

REV.	DESCRIPTION	DATE	DRAWN
A	New	10.11.2006	RH
B	frame	23.07.2008	Ronny
C	general update	09.08.2019	Ronny

RECOMMENDED PCB HOLE LAYOUT "MALE"



Layout Top View
(Tolerance ±0.05)

E-tec 2019 © - all rights reserved www.e-tec.asia



	UNIT	mm		DRAWN	RH	DATE	10.11.2006	DWG. NO.	SDM-NIP7/L2T	SHEET 2/2
	SCALE	Free		CHECK	Ronny	DATE	09.08.2019	SERIES NO.	SDM-xxx-NIP7-xx/L2TX	REV. C
	GENERAL TOLERANCE		X.° ±	X. ±	APPROVE	Fagi	DATE	09.08.2019		
			.X° ±	.X ±						
		.XX° ±	.XX ± 0.25							
		.XXX° ±	.XXX ±							

PCB Hole Layout for
Waterproof D-Sub
Standard "Male"
Right Angle Type w/o Brackets