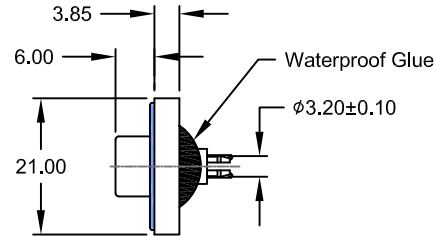
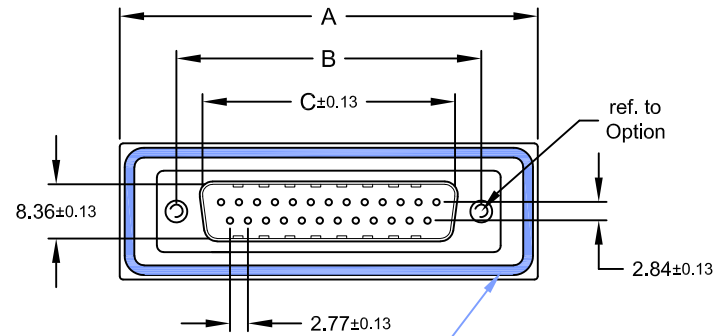
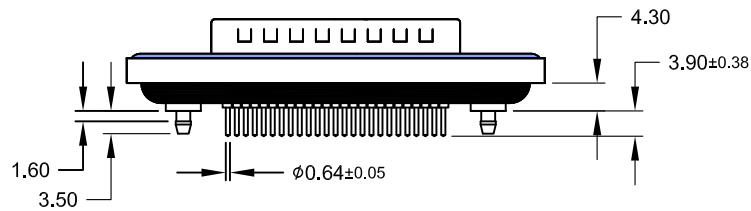


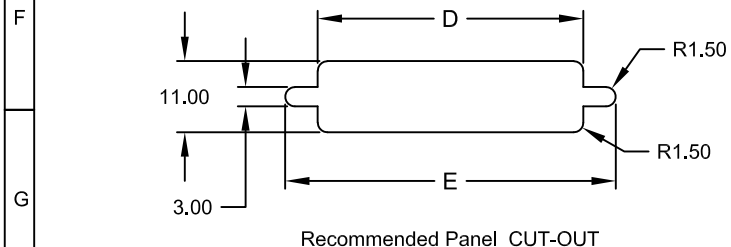
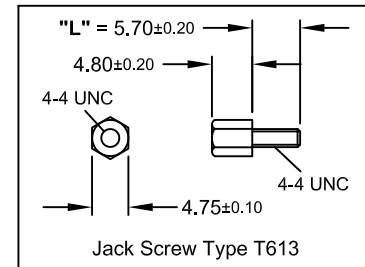
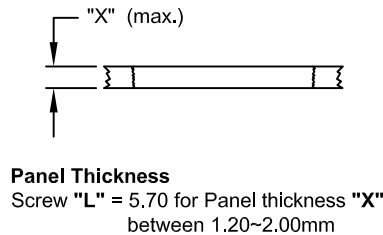
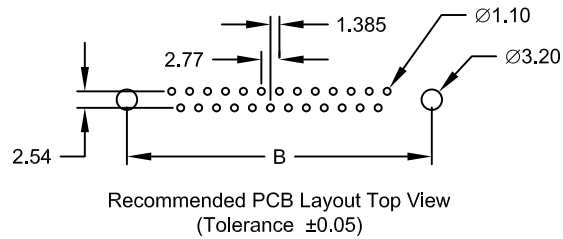
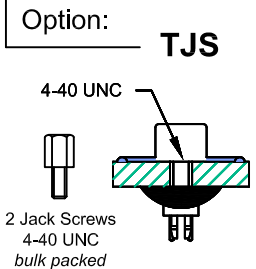
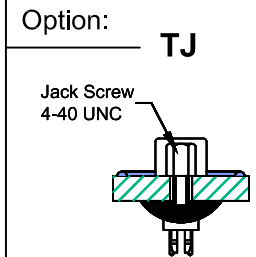
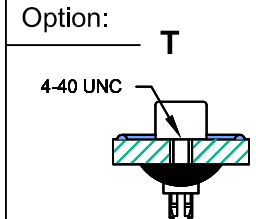
REV.	DESCRIPTION	DATE	DRAWN
A	New	14.03.2017	Ryan
B	general update	27.02.2018	Ronny
C	update	31.07.2019	Ronny



Order Code
SDM-xxx-SIP11-55/BRTXX



Dimension mm					No. of Contact
A	B	C	D	E	
39,40	24,99	16,92	20,00	28,20	009
47,70	33,32	25,25	28,00	36,50	015
64,50	47,04	38,96	41,50	51,00	025



Specifications
Electrical
 Current rating: 5A
 Insulation resistance: 5000MΩ min.
 Contact resistance: 10mΩ max.
 Voltage rating: 250V AC rms max.
 Withstanding voltage: 1000V AC rms

Material
 Contact: Brass
 Plating: Au flash over Ni
 Insulator: PBT UL 94V-0
 Shell: Steel
 Plating: Ni
 Operating temperature: -55°C to +85°C

Salt Spray: 48 Hours
 Waterproof rating: IP 67 min.

E-tec 2019 © - all rights reserved www.e-tec.asia



UNIT	GENERAL TOLERANCE		DRAWN	DATE	DWG. NO.	SHEET 1/1
mm	X.° ±	X. ±	Ryan	14.03.2017	SDM-SIP11/BRT	REV. C
SCALE	.X° ±	.X ±	Ronny	31.07.2019	SERIES NO.	
Free	.XX° ±	.XX ± 0.25	Fagi	31.07.2019	SDM-xxx-SIP11-55/BRTXX	
	.XXX° ±	.XXX ±				

Waterproof D-Sub "Male"
 Standard Solder Tail Type
with Board Lock