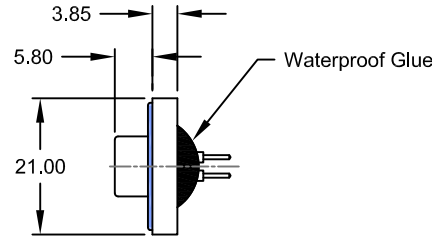
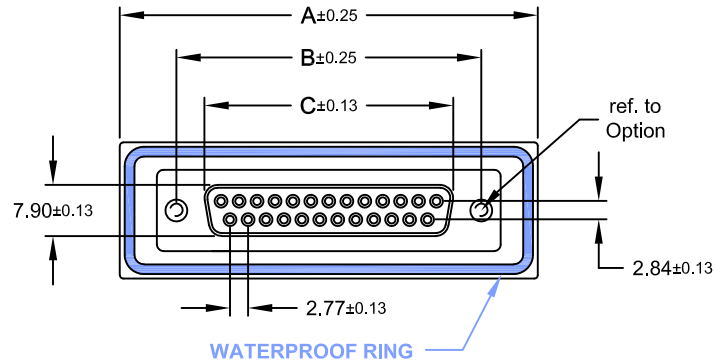
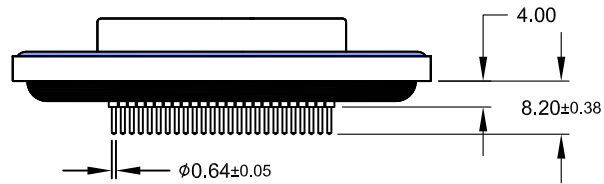


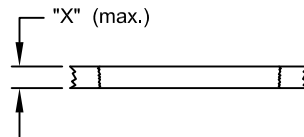
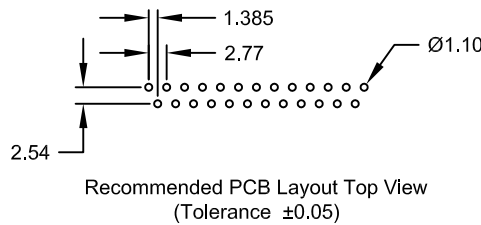
REV.	DESCRIPTION	DATE	DRAWN
A	New	05.04.2017	Ryan
B	general update	27.02.2018	Ronny
C	update	29.07.2019	Ronny



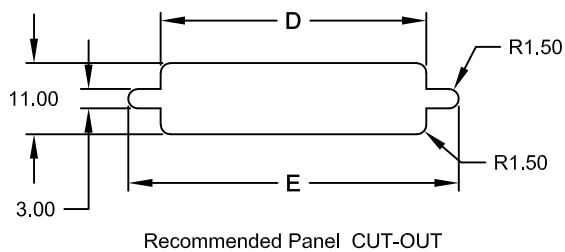
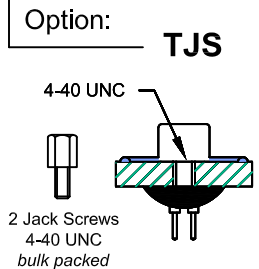
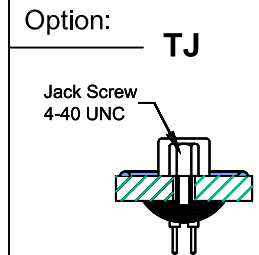
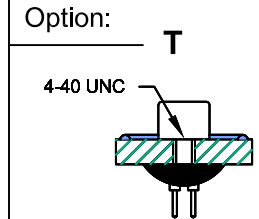
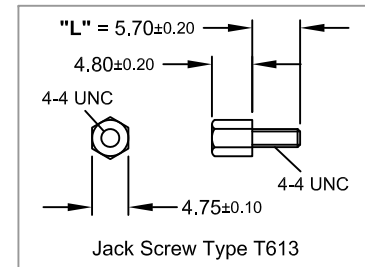
**Order Code**  
SDF-xxx-SIP11-55/TXX



Dimension mm					No. of Contact
A	B	C	D	E	
39,40	24,99	16,33	20,00	28,20	009
47,70	33,32	24,66	28,00	36,50	015
64,50	47,04	38,38	41,50	51,00	025



**Panel Thickness**  
Screw "L" = 5.70 for Panel thickness "X" between 1.20~2.00mm



**Specifications**

**Electrical**  
Current rating: 5A  
Insulation resistance: 5000MΩ min.  
Contact resistance: 10mΩ max.  
Voltage rating: 250V AC rms max.  
Withstanding voltage: 1000V AC rms

**Material**

Contact: Brass  
Plating: Au flash over Ni  
Insulator: PBT UL 94V-0  
Shell: Steel  
Plating: Ni  
Operating temperature: -55°C to +85°C



Salt Spray: 48 Hours  
Waterproof rating: IP 67 min.

E-tec 2019 © - all rights reserved www.e-tec.asia



UNIT	GENERAL TOLERANCE		DRAWN	DATE	DWG. NO.	SHEET 1/1
mm	X.° ±	X. ±	Ryan	05.04.2017	SDF-SIP11/T	
SCALE Free	.X° ±	.X ±	CHECK Ronny	29.07.2019		REV. C
	.XX° ±	.XX ± 0.25	APPROVE Fagi	29.07.2019	SERIES NO.	
	.XXX° ±	.XXX ±			SDF-xxx-SIP11-xx/TXX	

**Waterproof D-Sub**  
Standard "Female"  
*Straight Solder Tail Type*