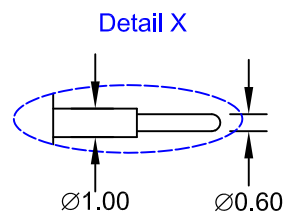
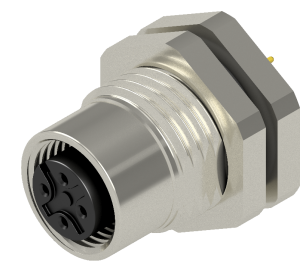
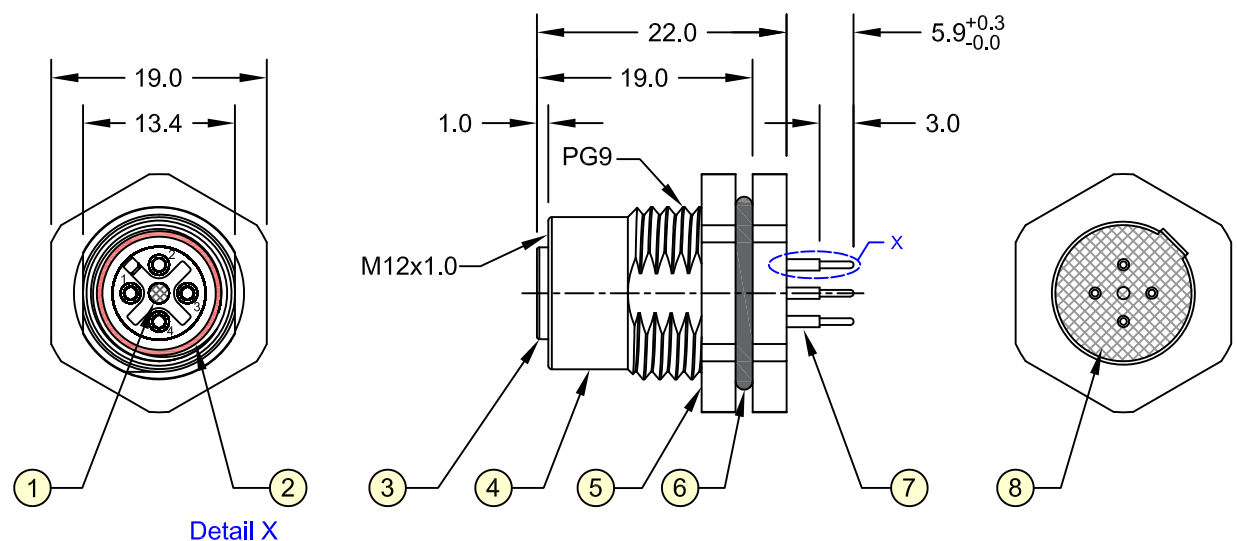


REV.	DESCRIPTION	DATE	DRAWN
A	New	08.12.2016	Cherry
B	General update	04.07.2019	Cheng



**Order Code**  
M12-FA04-TVFP-55/00

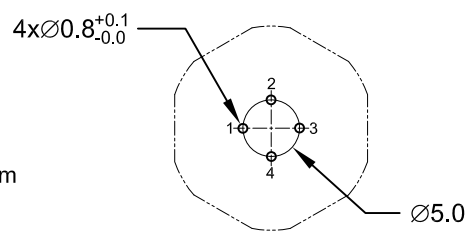
**Specifications**

**Electrical**  
 Current rating: 4A per contact  
 Insulation resistance: 100MΩ min.  
 Voltage rating: 60V AC/DC  
 Withstanding voltage: 1000V AC

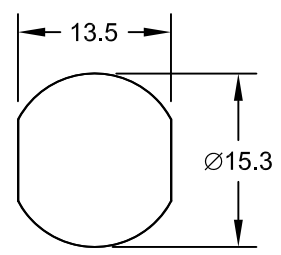
**Mechanical Requirements**

Waterproof rate: IP68  
 Recommended panel thickness: 0.8 to 5.0mm  
 Recommended torque: 9~10 kgf-cm  
 Operating life: 100 cycles min.

In accordance with IEC 61076-2-101:2012



Recommended PCB Layout Top View

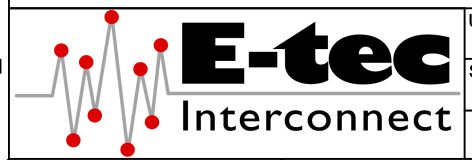


Recommended Panel Cut-out  
(Tolerance  $\pm 0.05$ )



Item	Part Name	Materials / Finish(Color)	Q'TY
1	Contact	Copper Alloy / Au Plated	4
2	Gland Pin	Thermoplastic / Black	1
3	O-Ring	Silicone / Red	1
4	Housing	Thermoplastic / Black	1
5	Metal Body	Copper Alloy / Ni Plated	1
6	Hex Nut	Copper Alloy / Ni Plated	1
7	O-Ring	NBR / Black	1
8	Glue	Epoxy / Black	-

E-tec 2019 © - all rights reserved www.e-tec.asia



UNIT	mm	GENERAL TOLERANCE		DRAWN	Cherry	DATE	08.12.2016	DWG. NO.	M12-FA04-TVFP-55/00	SHEET 1/1
SCALE	Free	X.° ±	X. ±	CHECK	Cheng	DATE	04.07.2019	SERIES NO.	M12-FA04-TVFP-55/00	REV. B
		.XX° ±	.XX ± 0.20	APPROVE	Fagi	DATE	04.07.2019			
		.XXX° ±	.XXX ±							

**M12 Circular Connector**  
**4-Pin Female A - Coding Type**  
 THT - Panel Front Mount