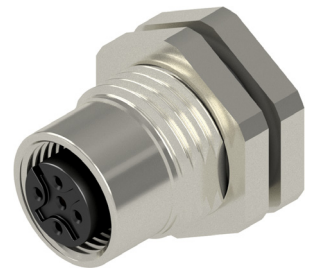
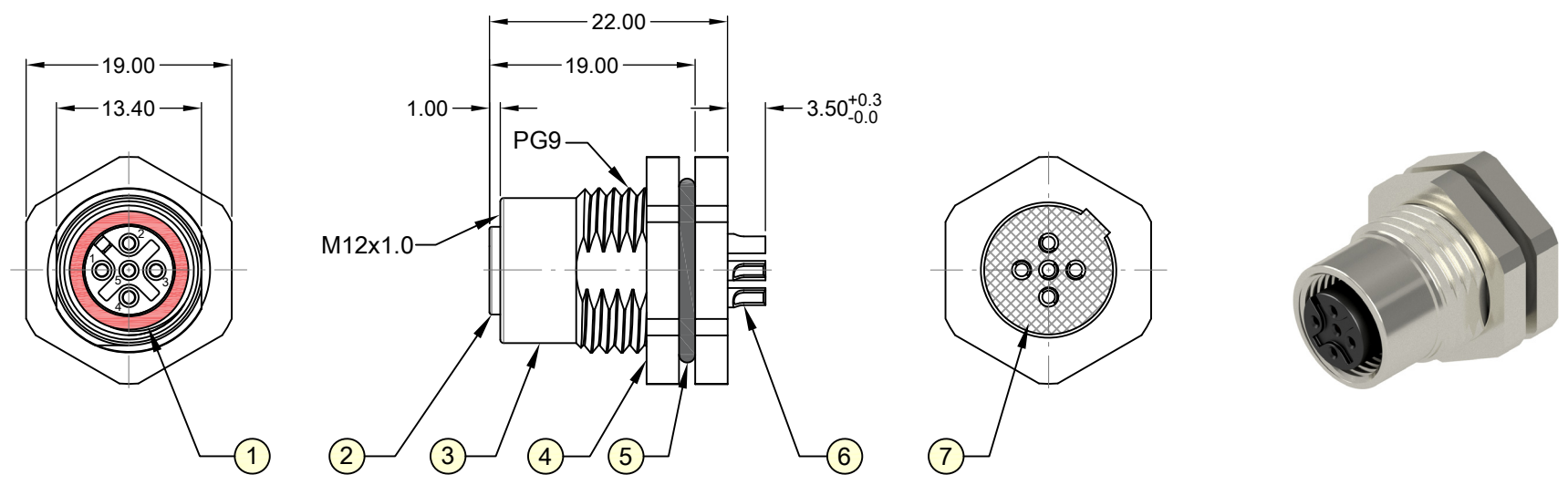


REV.	DESCRIPTION	DATE	DRAWN
A	New	09.03.2017	Cherry
B	General update	04.07.2019	Cheng
C	Torque 9~10kgf-cm → 14~15kgf-cm	14.09.2020	Cherry

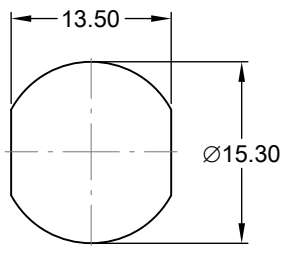


**Specifications**

**Electrical**  
 Current rating: 4A per contact  
 Insulation resistance: 100MΩ min.  
 Voltage rating: 60V AC/DC  
 Withstanding voltage: 1000V AC

**Mechanical Requirements**  
 Waterproof rate: IP68  
 Recommended panel thickness: 0.8 to 5.0mm  
 Recommended torque: 14~15 kgf-cm  
 Operating life: 100 cycles min.

Operating temperature: -40°C to +85°C  
 In accordance with IEC 61076-2-101:2012



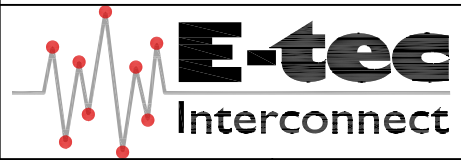
Recommended Panel Cut-out  
(Tolerance ±0.05)

**Order Code**  
**M12-FA05-CVFP-55/00**



Item	Part Name	Materials / Finish(Color)	Q'TY
1	O-Ring	Silicone / Red	1
2	Housing	Thermoplastic / Black	1
3	Metal Body	Copper Alloy / Ni Plated	1
4	Hex Nut	Copper Alloy / Ni Plated	1
5	O-Ring	NBR / Black	1
6	Contact	Copper Alloy / Au Plated	5
7	Glue	Epoxy / Black	-

E-tec 2020 © - all rights reserved www.e-tec.asia



UNIT	SCALE	GENERAL TOLERANCE	DRAWN	DATE	DWG. NO.	SHEET 1/1
mm	Free	X.° ± X. ±	Cherry	09.03.2017	M12-FA05-CVFP-55/00	REV. C
		.XX° ± .XX ± 0.50	Cheng	14.09.2020	SERIES NO.	
		.XXX° ± .XXX ±	Fagi	14.09.2020	M12-FA05-CVFP-55/00	

**M12 Circular Connector**  
**5-Pin Female - A-Coding Type**  
**THT - Panel Front Mount**