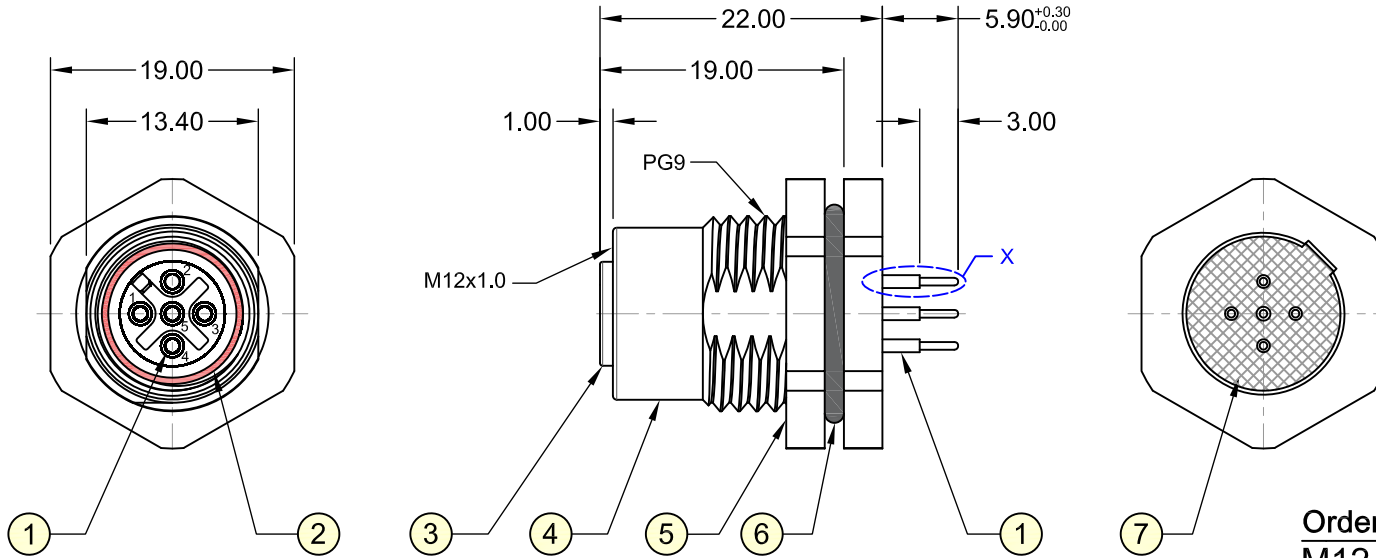
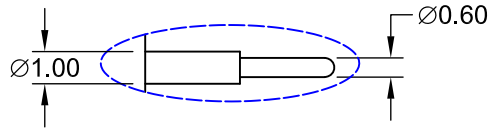


REV.	DESCRIPTION	DATE	DRAWN
A	New	13.03.2020	Cherry



Order Code
M12-FA05-TVFP-55/00

Detail X



Specifications

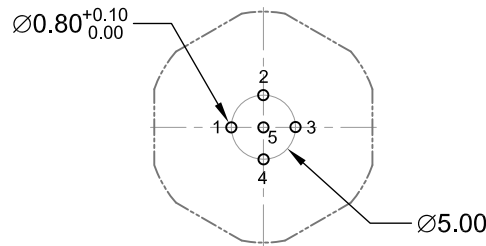
Electrical

Current rating: 4A per contact
Insulation resistance: 100MΩ min.
Voltage rating: 60V AC/DC
Withstanding voltage: 1000V AC

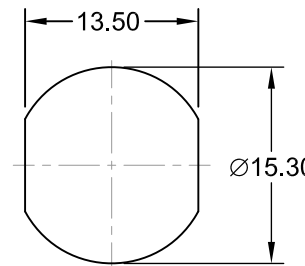
Mechanical Requirements

Waterproof rate: IP68
Recommended panel thickness: 0.8 to 5.0mm
Recommended torque: 9~10 kgf-cm
Operating life: 100 cycles min.

In accordance with IEC 61076-2-101:2012



Recommended PCB Layout Top View



Recommended Panel Cut-out
(Tolerance ±0.05)

Item	Part Name	Materials / Finish(Color)	Q'TY
1	Contact	Copper Alloy / Au Plated	5
2	O-Ring	Silicone / Red	1
3	Housing	Thermoplastic / Black	1
4	Metal Body	Copper Alloy / Ni Plated	1
5	Hex Nut	Copper Alloy / Ni Plated	1
6	O-Ring	NBR / Black	1
7	Glue	Epoxy / Black	-

E-tec 2020 © - all rights reserved www.e-tec.asia



UNIT	mm	GENERAL TOLERANCE		DRAWN	DATE	DWG. NO.	SHEET 1/1
SCALE	Free	X.° ±	X. ±	Cherry	13.03.2020	M12-FA05-TVFP-55_00	REV. A
		.XX° ±	.X ±	Cheng	13.03.2020	SERIES NO.	
		.XX° ±	.XX ± 0.50	APPROVE	DATE	M12-FA05-TVFP-55_00	
		.XXX° ±	.XXX ±	Fagi	13.03.2020		

M12 Circular Connector
5-Pin Female **A-Coding** Type
THT - Panel Front Mount