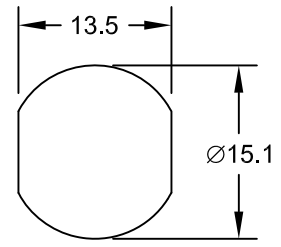
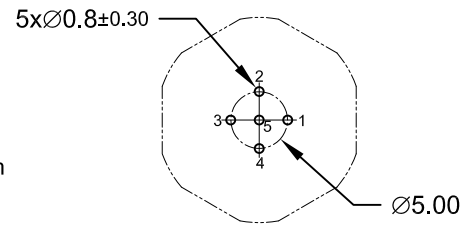
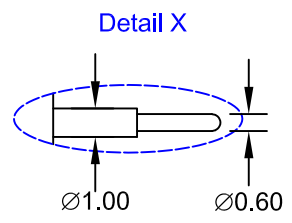
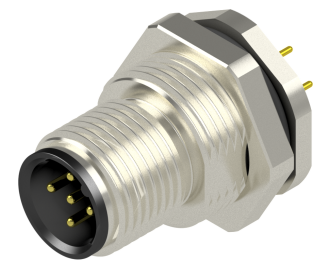
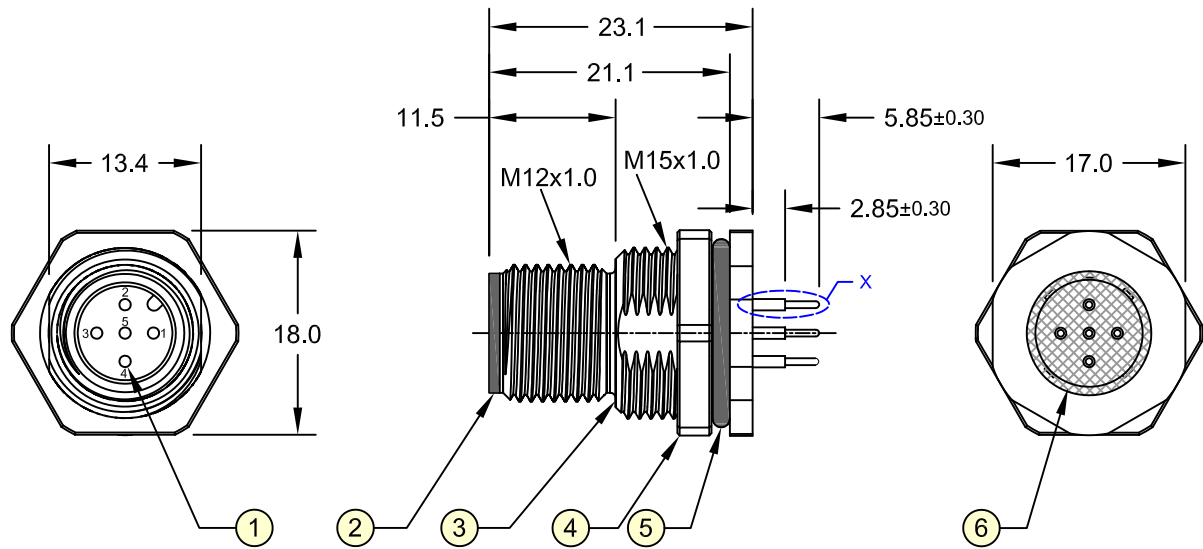


REV.	DESCRIPTION	DATE	DRAWN
A	New	08.03.2017	Cherry
B	General update	04.07.2019	Cheng



Order Code
M12-MA05-TVFP-55/00



Specifications

Electrical
Current rating: 4A per contact
Insulation resistance: 100MΩ min.
Voltage rating: 60V AC/DC
Withstanding voltage: 1000V AC

Mechanical Requirements

Waterproof rate: IP68
Recommended panel thickness: 0.8 to 5.0mm
Recommended torque: 9~10 kgf-cm
Operating life: 100 cycles min.

In accordance with IEC 61076-2-101:2012

Recommended PCB Layout Top View

Recommended Panel Cut-out
(Tolerance ±0.05)

Item	Part Name	Materials / Finish(Color)	Q'TY
1	Contact	Copper Alloy / Au Plated	5
2	Housing	Thermoplastic / Black	1
3	Metal Body	Copper Alloy / Ni Plated	1
4	Hex Nut	Copper Alloy / Ni Plated	1
5	O-Ring	NBR / Black	1
6	Glue	Epoxy / Black	-

E-tec 2019 © - all rights reserved www.e-tec.asia



UNIT	SCALE	GENERAL TOLERANCE	DRAWN	DATE	DWG. NO.	SHEET
mm	Free	X.° ±	Cherry	08.03.2017	M12-MA05-TVFP-55/00	1/1
		.X° ±	Cheng	04.07.2019	SERIES NO.	REV. B
		.XX° ±	Fagi	04.07.2019	M12-MA05-TVFP-55/00	
		.XXX° ±				

M12 Circular Connector
5-Pin Male A - Coding Type
THT - Panel Front Mount