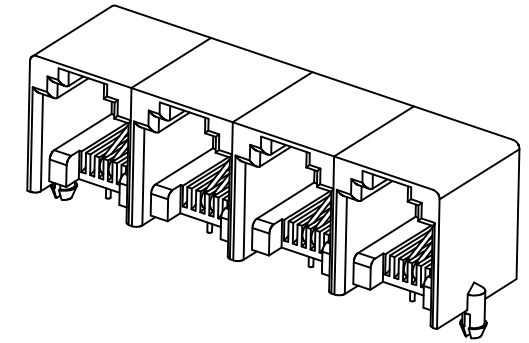
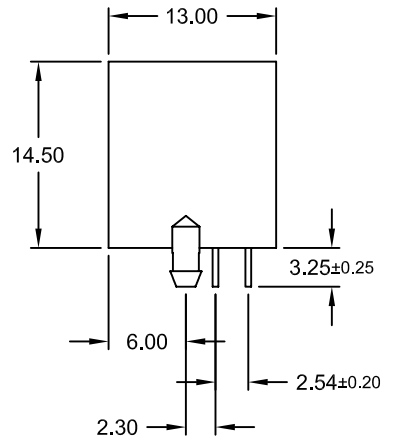
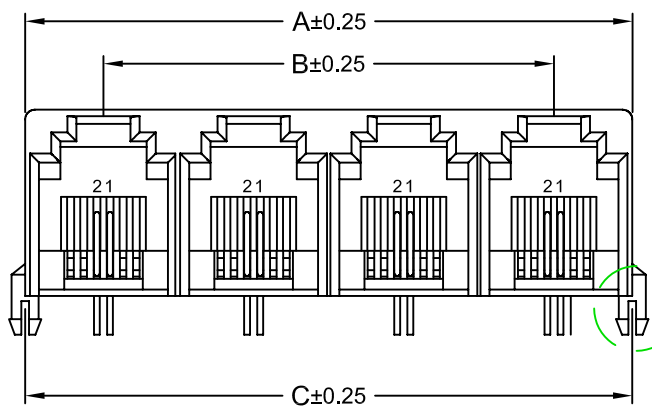
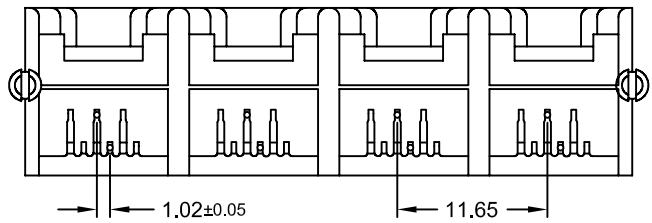
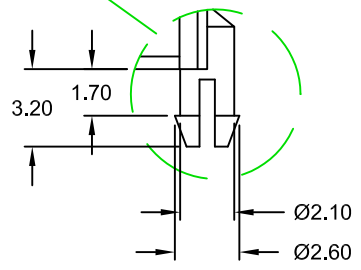


REV.	DESCRIPTION	DATE	DRAWN
A	New	14.12.2016	Cherry



**Detail X**  
(Tolerance ±0.15)



Dimension mm	No. of Ports			
	3	4	6	8
<b>A</b>	35,55	47,20	70,50	93,80
<b>B</b>	23,30	34,95	58,25	81,55
<b>C</b>	35,25	46,90	70,20	93,50

## Specifications

### Electrical

Current rating: 1.5A  
 Insulation resistance: 500MΩ min.  
 Withstanding voltage: 1000V AC / Minute  
 Contact resistance: 30mΩ max.

### Material

Contact: Copper Alloy  $\phi$ 0.45mm  
 Plating: Au on solder area;  
 Au on contact area  
 Insulator: PBT (Black or Gray) UL 94V-0  
 Operating temperature: -40°C to +85°C

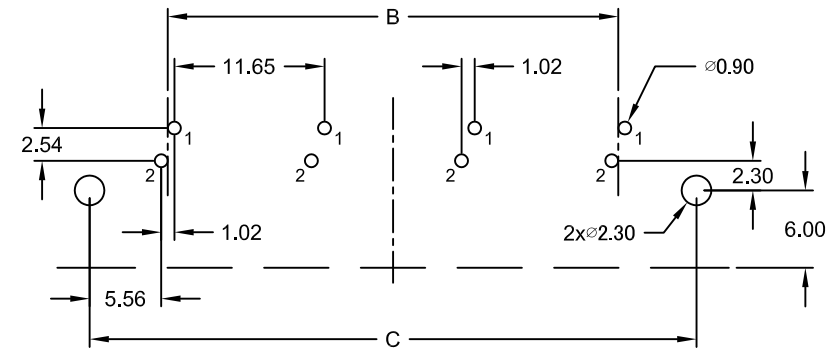
Cavity comply with FCC Rules and Regulations Part 68, Subpart F

replace "X" with Number of Ports

3, 4, 6 or 8

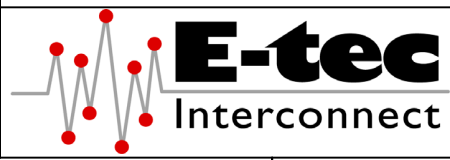
add "/G" if gray color housing

PART NUMBER	GOLD PLATING CONTACT AREA
MJS-x62-S3S0-55	flash
MJS-x62-S3S0-56	6μ"
MJS-x62-S3S0-57	15μ"
MJS-x62-S3S0-58	30μ"
MJS-x62-S3S0-HH	50μ"



Recommended PCB Layout Top View  
(Tolerance ±0.05)

E-tec 2016 © - all rights reserved



UNIT mm	GENERAL TOLERANCE		DRAWN Cherry	DATE 14.12.2016	DWG. NO. 2311200	SHEET 1/1
	SCALE Free	X.° ±	X. ±	CHECK Ronny	DATE 14.12.2016	REV. A
		.XX° ±	.XX ± 0.13	APPROVE Hogi	DATE 14.12.2016	SERIES NO. MJS-x6x-S3S0-xx
		.XXX° ±	.XXX ±			

**Multi Port "side by side" PCB Jack**  
 RJ11 3, 4, 6 or 8x <6P2C> "Tab up"  
 side entry - short profile Type  
 NON shielded, **without panel stop**