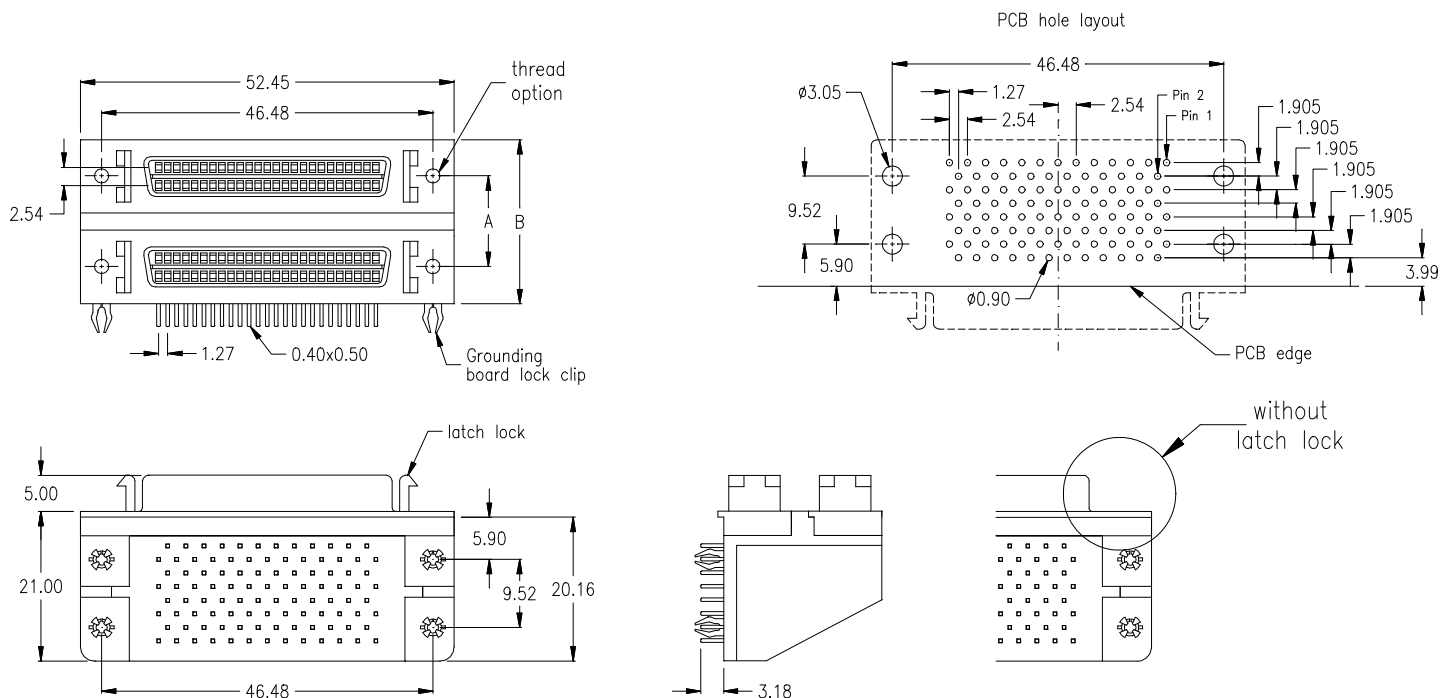
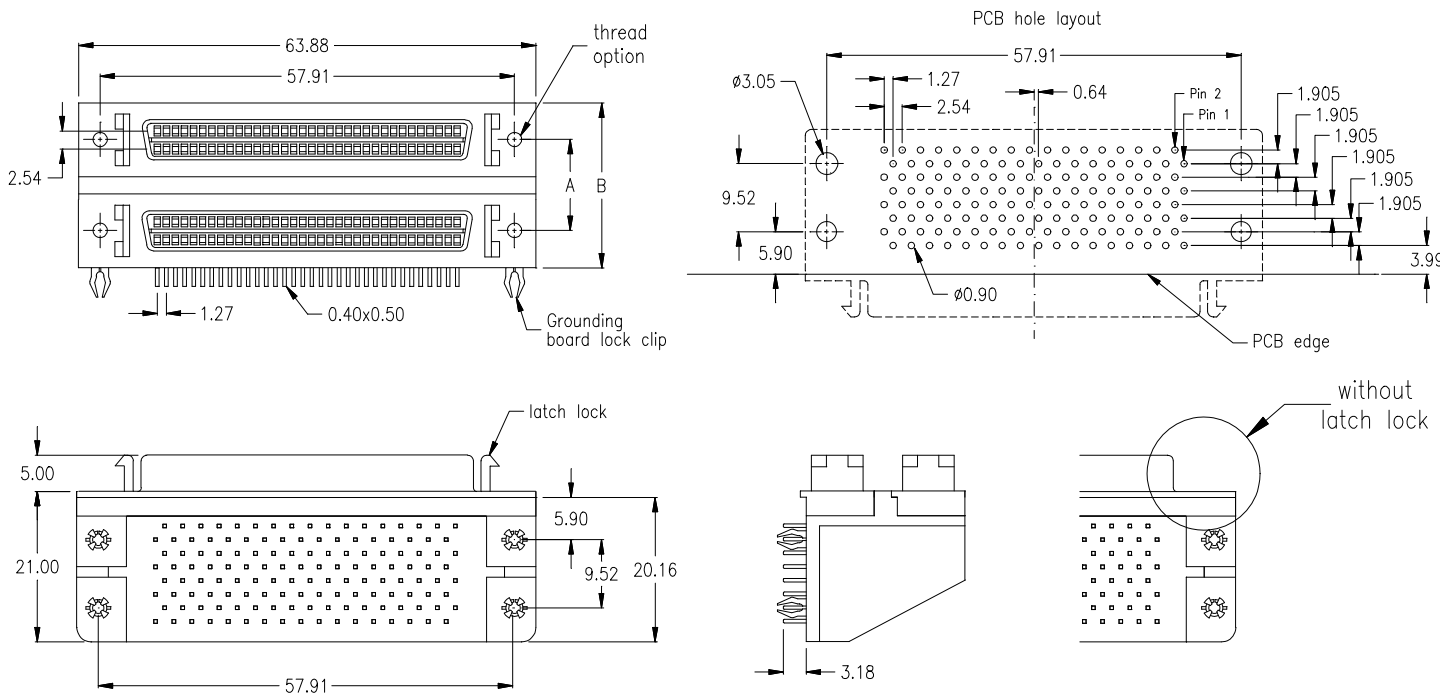


50-pin female / 50-pin female



with latch lock, and 4-40 UNC thread option	with latch lock, and 2-56 UNC thread option	without latch lock, and 4-40 UNC thread option	without latch lock, and 2-56 UNC thread option	Distance Dimensions
CSD-5050-6-95-FV2-0	CSD-5050-6-95-FV2-1	CSD-5050-6-95-FV3-0	CSD-5050-6-95-FV3-1	„A“ = 15.24 „B“ = 25.54

68-pin female / 68-pin female



with latch lock, and 4-40 UNC thread option	with latch lock, and 2-56 UNC thread option	without latch lock, and 4-40 UNC thread option	without latch lock, and 2-56 UNC thread option	Distance Dimensions
CSD-6868-6-95-FV2-0	CSD-6868-6-95-FV2-1	CSD-6868-6-95-FV3-0	CSD-6868-6-95-FV3-1	„A“ = 15.24 „B“ = 25.54



mechanical data	
Mating force per contact	≤ 3,4 N
Unmating force per contact	≥ 0,2 N
Operating temperature	-55° C to +105° C

materials and plating	
Insulator	PBT glassfilled black UL 94V - 0
Shell	Zinc Alloy
- plating (tin leadfree)	tin or nickel plated
Male contact	Phosphor Bronze
- plating (tin leadfree)	-95 = solder side Sn; contact side Au over Ni
Female contact	Phosphor Bronze
- plating (tin leadfree)	-95 = solder side Sn; contact side Au over Ni

electrical data	
max. Current rating	1 A
Withstanding voltage	500 V AC rms. for 1 minute
Contact resistance	25 mΩ max. at 10mA
Insulation resistance	1000 MΩ min.

**All connectors are with double-shield metal covers
and over-molded covers to provide full protection from EMI and ESD**

SCSI – II type with „latch lock“, „screw lock“ type for SCSI – III connection

SCSI Mini Delta Ribbon connectors are available on request.