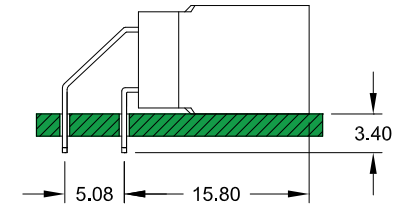
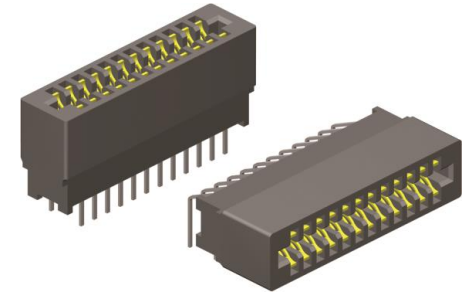
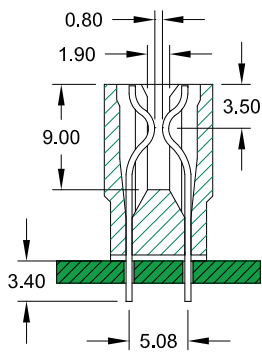
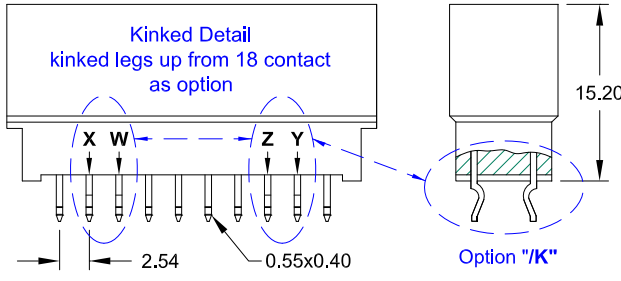
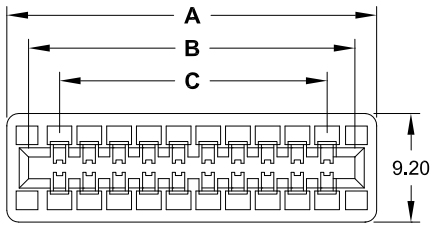


Card Edge Connector - THT - 2.54mm pitch "X" Contact Style



Application and Features

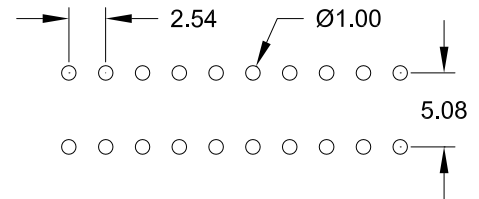
Hi-rel dual beam contact assures reliable PC-board connection.
Accepts PC Board thickness of 1.37mm to 1.78mm.
Straight type up from 18 contacts can be delivered with some kinked legs.
Pls. order separate datasheet for more options.

Connectors with mounting ears or solder eyes are also available.
Please contact your nearest sales office for more details.

"X" Contact Style



PCB Hole Layout



Important:

The PCB Layout is not identical for all pin count's.
Individual datasheets are available on request.

Specifications

Current rating 3 A
Insulation resistance 5000 MΩ min.
Contact resistance 20 mΩ max.
Withstanding voltage 1000 V AC

Operating temperature - 55°C to +85°C
Contact material (RoHS compliant) Brass
Insulator material (RoHS compliant) PBT UL 94 V-0
Insertion force 3.33N max. / pair
Withdrawal force 0.27N min. / pair

Dimensions

"S" Style kinked Option	No. of Contacts	DIM "A" mm	DIM "B" mm	DIM "C" mm	"S" Style kinked Option	No. of Contacts	DIM "A" mm	DIM "B" mm	DIM "C" mm	"S" Style kinked Option	No. of Contacts	DIM "A" mm	DIM "B" mm	DIM "C" mm
---	006	14.22	10.16	5.08	XY	028	42.16	38.10	33.02	XY	050	70.10	66.04	60.96
---	008	16.76	12.70	7.62	XY	030	44.70	40.64	35.56	XY	052	72.64	68.58	63.50
---	010	19.30	15.24	10.16	XY	032	47.24	43.18	38.10	XY	054	75.18	71.12	66.04
---	012	21.84	17.78	12.70	XY	034	49.78	45.72	40.64	XY	056	77.72	73.66	68.58
---	014	24.38	20.32	15.24	WXYZ	036	52.32	48.26	43.18	XY	058	80.26	76.20	71.12
---	016	26.92	22.86	17.78	XY	038	54.86	50.80	45.72	XY	060	82.80	78.74	73.66
XY	018	29.46	25.40	20.32	XY	040	57.40	53.34	48.26	WXYZ	062	85.34	81.28	76.20
XY	020	32.00	27.94	22.86	XY	042	59.94	55.88	50.80	WXYZ	064	87.88	83.82	78.74
XY	022	34.54	30.48	25.40	XY	044	62.48	58.42	53.34	WXYZ	068	92.96	88.90	83.82
XY	024	37.08	33.02	27.94	XY	046	65.02	60.96	55.88	WXYZ	070	95.50	91.44	86.36
WXYZ	026	39.62	35.56	30.48	XY	048	67.56	63.50	58.42	WXYZ	072	98.04	93.98	88.90

How to order

ECC - xxx /X - X 100 - 95

Nbr of contacts	Option	Connector Style	Plating
see above table	<p>/K = if with kinked legs</p> <p>kinked legs for straight, S100 Style up from 18 contact possible</p>	<p>S = straight (with kinked legs possible)</p> <p>R = right angle (no kinked legs possible)</p> <p>Attention high MOQ's</p> <p>Refer to Connector Style SC100 and RC100 on page 89a for a close equivalent</p>	<p>95 = Tin/Gold (tin leadfree)</p> <p>other platings on request</p>