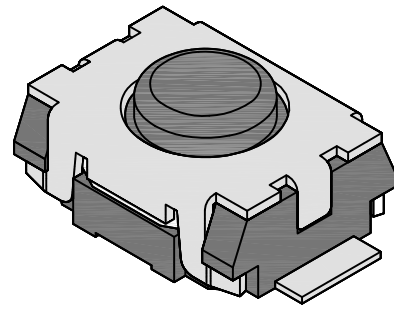
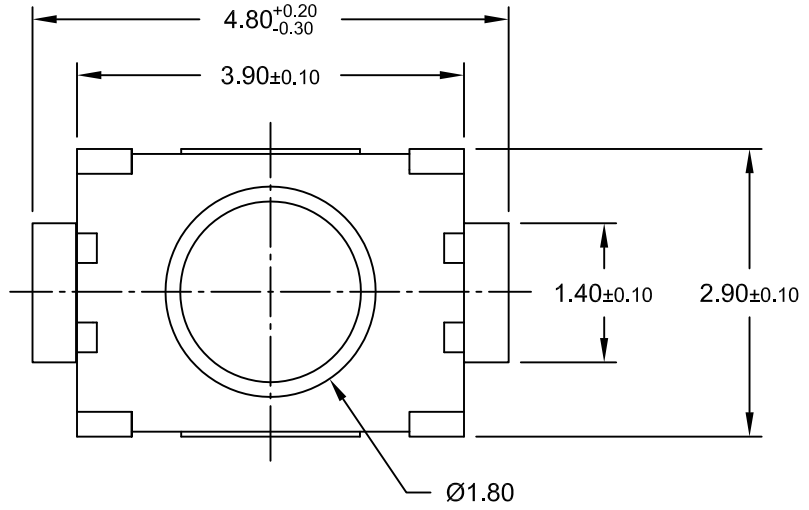
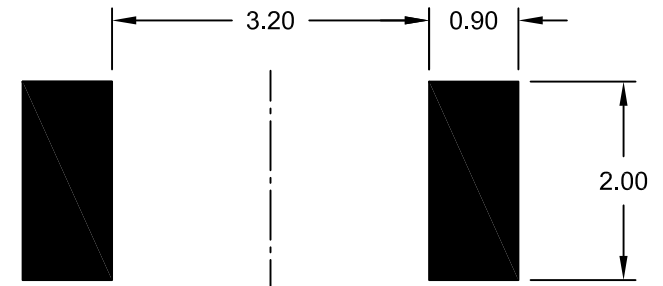
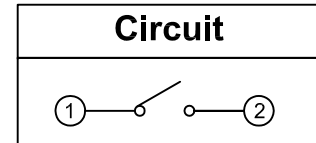
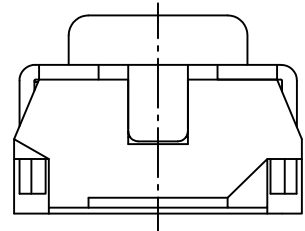
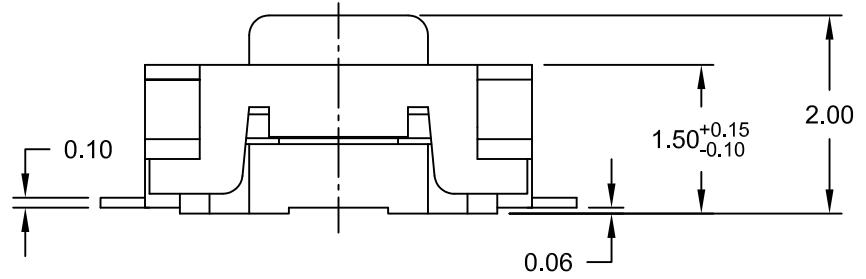


REV.	DESCRIPTION	DATE	DRAWN
A	New	13.09.2010	Ronny
B	general update; new RoHS	04.08.2017	RH



**Order Code**  
**TSM-102-E2C/1SZ**



Recommended PCB Layout Top View  
(Tolerance ±0.05)

**Material**

Contact: Stainless Steel; Silver plated  
Solder Terminal: PhBz; Silver plated  
Cover: Stainless Steel  
Stem: LCP UL 94V-0



Operating force (off): side push 2.2N ±0.6N  
vertical push 1.6N ±0.5N  
Stroke: side push 0.20 ±0.10mm  
vertical push 0.13 ±0.10mm  
Operating life: 100.000 cycles min.

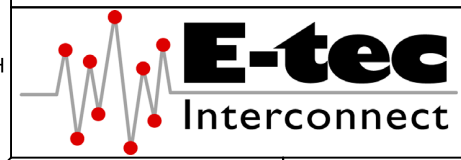
Operating temperature: -20°C to +70°C  
Processing temperature: +250°C +0/-5°C  
for 10 seconds

**Specifications**

**Electrical**

Current rating: 50mA @ 12V DC  
Insulation resistance: 100MΩ min.  
Contact resistance: 100mΩ max.  
Withstanding voltage: 100V AC  
Capacitance: 5pF max. @ 1MHz ±10KHz

E-tec 2017 © - all rights reserved www.e-tec.asia



UNIT	GENERAL TOLERANCE		DRAWN	DATE	DWG. NO.	SHEET 1/1
mm	X.° ±	X. ±	Ronny	13.09.2010	TSM-E2C/1SZ	REV. B
SCALE	.X° ±	.X ±	Hogi	04.08.2017	SERIES NO.	
	.XX° ±	.XX ± 0.20	APPROVE	DATE	TSM-102-E2C/1SZ	
	.XXX° ±	.XXX ±	Hogi	04.08.2017		

**Tactile Switch**  
**SMT Type**  
extended Actuator 2.00mm